

TECHNICAL DATA SHEET

PMA Automation - BSH - Tube clamp

One-piece

PMA



Applications:

- In automation applications for guiding or fixing PMA conduits

Features & Benefits:

- Single-piece, robust construction
- Easy installation
- To be used in combination with standard halfshells BGN
- Space saving design allows optimum installation in automation applications
- Reduces mechanical stress on the cable harness extending the lifespan of the application
- Increased freedom of movement for cable looms with individual combination of functional inserts:
 - swivel base DKLK
 - ball joint half-shells BSSK
 - ball joint sleeve BTK
 - ball joint termination BKE
 - half-shells BGS for BKS cable star

Materials:

- High-grade, specially formulated polyamide 6

Compatible with:

- PMAFLEX Pro Conduits
- PMAFLEX Multilayer Conduits
- PMAFLEX Conduits

Weathering resistance:

- Very good UV resistance and weathering characteristics

Colour:

- Black

Chemical properties:

- Please refer to www.pma.ch (Technical Information / Chemical Resistance)

Environmental properties:

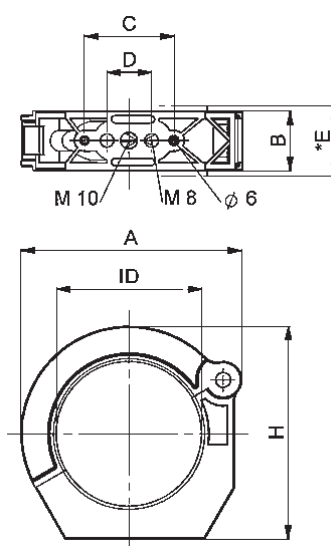
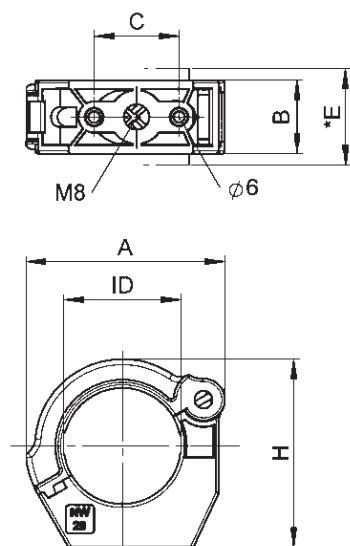
- Free from halogens and cadmium
- RoHS and REACH compliant

Product selection:

Part no.	Fits to half-shells		Conduit size	Dimensions in mm (nom.)							Weight	Packing unit
	strain relief	slide		ID	A	B	C	D	*E	H		
black			NW								kg/100 pcs	pcs/PU
BSH-R23	BGN-S23T		23	34.9	63.3	26.0	30.0	-	34.0	60.5	3.6	30
BSH-R23	BGN-S23G		23	34.9	63.3	26.0	30.0	-	34.0	60.5	3.6	30
BSH-R29	BGN-S29GT	BGN-R29	29	41.3	70.3	26.0	30.0	-	34.0	67	4.0	30
BSH-R36	BGN-S36GT	BGN-R36	36	49.1	81.6	26.0	30.0	-	36.0	77.5	5.5	20
BSH-R48	BGN-S48T		48	61.0	95.8	26.0	30.0	-	34.0	91	8.0	20
BSH-R48	BGN-S48G	BGN-R48	48	61.0	95.8	26.0	30.0	-	34.0	91	8.0	20
BSH-R56	BGN-S56G	BGN-R56	56	75.5	112.6	30.0	60.0	30.0	38.0	109.8	11.5	20
BSH-R70	BGN-R70G	BGN-R70	70	96.5	148	39.5	60.0	30.0	45.0	142.5	24.0	20

* Width dimension over half-shell

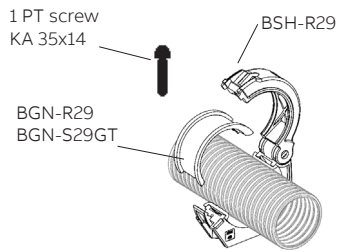
Our customer service dept. or local distribution partner will be pleased to help you concerning product availability and lead time



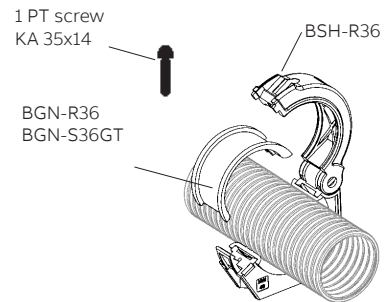
Examples for combination possibilities:

The BSH tube clamp can be used to suit the application with different inserts.

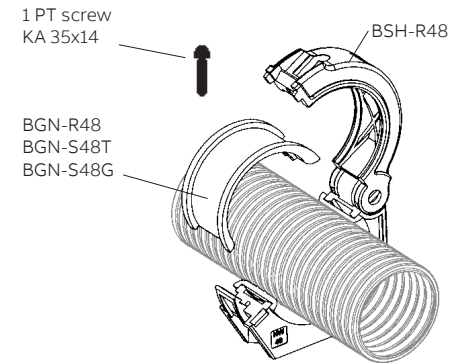
NW 29



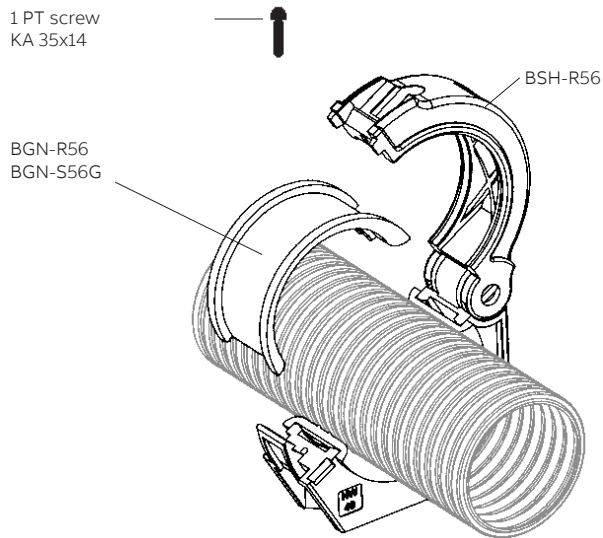
NW 36



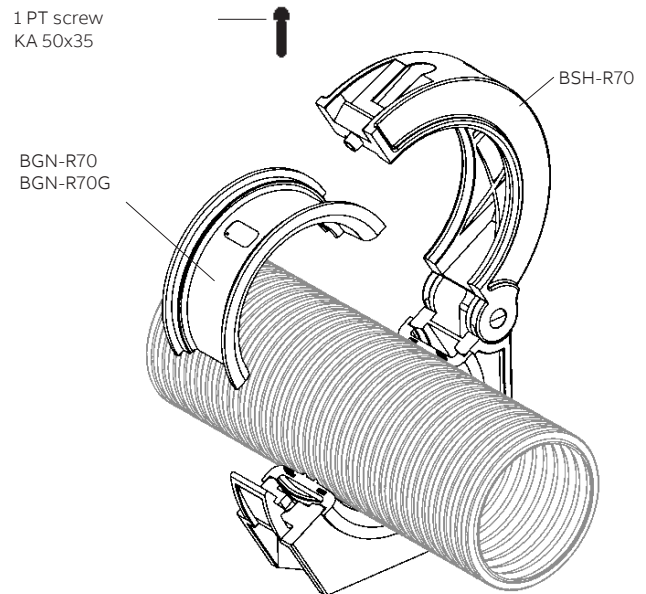
NW 48



NW 56



NW 70



Mechanical Properties:	Value:	Test parameters:	Test method:
Tensile modulus	1'200 ... 3'700 N/mm ²		ISO 527
Tensile strength	45 ... 65 N/mm ²		ISO 527
Notched bar impact test	4 ... 20 kJ/m ²		ISO 180/1C
Vibration and shock standard	Cat. 2	IEC 61373, IEC 60068-2-27 / -64	

Thermal properties:	Value:	Test parameters:	Test method:
Continuous application temperature	-50 ... +105°C		PMA DO 9.21-4510
Upper application temperature	+120°C	(20'000 h)	PMA DO 9.21-4360
Short-term	+160°C	(168 h)	PMA DO 9.21-4360

Content of delivery:

- Tube clamp,
- PT-screw, stainless steel
- Straight pin

Assembly instructions:

- Possible combinations, please see on page 3

ABB Switzerland Ltd,
PMA Cable Protection
Aathalstrasse 90
8610 Uster, Switzerland
Phone: +41 58 585 00 11
pma-info@ch.abb.com
www.pma.ch

Let's write the future.
Together. **abb.com**

We reserve the right to make technical changes or modify the contents of this document without prior notice. With regard to purchase orders, the agreed particulars shall prevail. ABB Installation Products Inc. does not accept any responsibility whatsoever for potential errors or possible lack of information in this document.

We reserve all rights in this document and in the subject matter and illustrations contained therein. Any reproduction, disclosure to third parties or utilization of its contents – in whole or in parts – is forbidden without prior written consent of ABB Inc. Copyright© 2019 ABB Installation Products Inc. All rights reserved

