

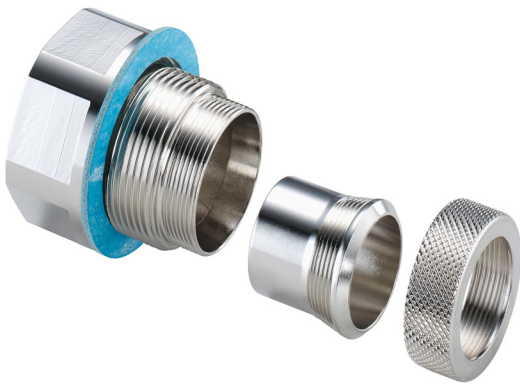
---

 TECHNICAL DATA SHEET

## EMCFIX - HFAK-M - EMC Adapter

EMC adapter for standard PMA fittings, metric thread

### PMA



Suitable for all types of PMA fittings with metric thread. Made from nickel-plated aluminum.



#### Applications:

- For indoor applications in machine building and railway vehicle construction

#### Features & Benefits:

- Low impedance braid connection
- High system shielding attenuation in combination with F.CU, F.CK and F.HY
- Disturbance signals such as electrical signals and magnetic fields will be discharged to the housing/casing
- Allows complete pre-assembly of the cable loom
- Easy and quick installation

#### Ingress protection:

- IP66, IP68 & IP69 (EN/IEC 60529) in connection with PMAFIX Pro & PMAFIX fittings

#### Materials:

- Nickel-plated aluminum

#### Compatible with:

- PMAFIX Pro & PMAFIX fittings
- PMA braid types: F.CU, F.CK and F.HY

#### Temperature range:

- -50°C ... +105°C continuous, +160°C short-term

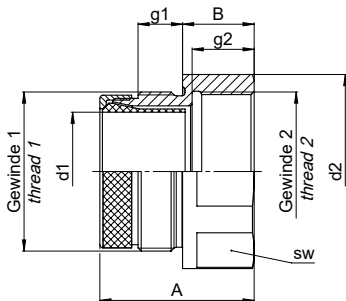
#### Environmental properties:

- Free from halogens and cadmium
- RoHS and REACH compliant

**Product selection:**

Part no.	Thread sizes		Recommended system application				Dimensions in mm (nom.)						Weight kg/100 pcs	Packing unit pcs/PU	
	Thread 1 metric	Thread 2 metric	Conduit		Braids		g1	g2	d1	d2	SW	A			B
			NW	F.CK	F.CU	F.HY									
HFAK-M20/M20-10	M20x1.5	M20x1.5	12	15	12 / 20	12 / 15	10.0	11.5	9.6	27.0	25.0	35.0	14.0	2.3	1
HFAK-M25/M25-11	M25x1.5	M25x1.5	17	20	20	15 / 20	11.0	12.5	14.6	33.0	30.0	37.0	15.0	2.9	1
HFAK-M32/M32-13	M32x1.5	M32x1.5	23	20 / 25	40	20	13.0	15.5	20.3	41.0	38.0	43.0	18.0	5.3	1
HFAK-M40/M40-13	M40x1.5	M40x1.5	29	25 / 30	40	35 / 40	13.0	19.5	28.1	50.0	46.0	47.0	22.0	7.0	1
HFAK-M50/M50-14	M50x1.5	M50x1.5	36	30 / 35	40	40	14.0	19.5	37.3	59.0	55.0	48.5	22.5	9.6	1
HFAK-M63/M63-14	M63x1.5	M63x1.5	48	35 / 50		40	14.0	19.5	47.0	75.0	70.0	49.0	23.0	16.0	1

These adapters specially fit braid types F.CU, F.CK and F.HY. Other braid types in connection with HFAK adapters on request.  
Our customer service dept. or local distribution partner will be pleased to help you concerning product availability and lead time



Thermal properties:	Value:	Test parameters:	Test method:
Continuous application temperature	-50 ... +105°C		PMA DO 9.21-4510
Upper application temperature	+120°C		PMA DO 9.21-4360
Short-term	+160°C		PMA DO 9.21-4360

**General:**

Optimal screening is guaranteed through 360° clamping of the copper braid to the fitting.

For use in applications, installations and systems where the requirements of EC EMC regulations must be fulfilled.

Low impedance connection allows high short circuit currents to pass

**Content of delivery:**

- Complete adapter with conical braid clamp
- Flat gasket for external threads (SVN4)

**Assembly instructions:**

- Please consider the appropriate assembly instructions on [www.pma.ch](http://www.pma.ch)

ABB Switzerland Ltd,  
PMA Cable Protection  
Aathalstrasse 90  
8610 Uster, Switzerland  
Phone: +41 58 585 00 11  
[pma-info@ch.abb.com](mailto:pma-info@ch.abb.com)  
[www.pma.ch](http://www.pma.ch)

Let's write the future.  
Together. **abb.com**

We reserve the right to make technical changes or modify the contents of this document without prior notice. With regard to purchase orders, the agreed particulars shall prevail. ABB Installation Products Inc. does not accept any responsibility whatsoever for potential errors or possible lack of information in this document.

We reserve all rights in this document and in the subject matter and illustrations contained therein. Any reproduction, disclosure to third parties or utilization of its contents – in whole or in parts – is forbidden without prior written consent of ABB Inc. Copyright© 2019 ABB Installation Products Inc. All rights reserved

