



# IFP

## Plugs for cable entry plates

### FEATURES

- Plugs for holes with diameter from 4,5 to 22,5 mm

The IFP inserts fit into the holes of the cable entry plates so that they can be used many times. They range from 4,5 to 22,5 mm diameter.

**Material:** PA6, halogens and silicones free

**Flammability:** self-extinguishing

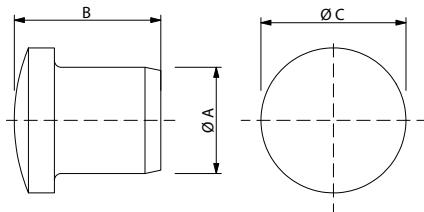
acc. UL94-HB

**Temperature:** -30°C... +100°C (static)

### RELATED PRODUCTS

- DES PM
- DES PDM
- SPP K Grommets
- SPP M Grommets
- SPG K Grommets
- SPG M Grommets

### Dimensions (mm)



| Model   | Code       | Ø Hole (mm) | Dimensions (mm) |      |      | Pcs (/pack) |
|---------|------------|-------------|-----------------|------|------|-------------|
|         |            |             | A               | B    | C    |             |
| IFP 5G  | 1732070002 | 4,5 - 8,0   | 5,5             | 12,5 | 10,0 | 10          |
| IFP 9G  | 1732070004 | 8,0 - 12,0  | 9,5             | 16,0 | 13,5 |             |
| IFP 12G | 1732070006 | 12,0 - 16,0 | 12,0            | 16,5 | 16,5 |             |
| IFP 16G | 1732070008 | 16,0 - 19,0 | 16,0            | 19,5 | 20,5 |             |
| IFP 20G | 1732070010 | 20,0 - 22,5 | 20,0            | 21,5 | 24,5 |             |

|         |            |             |      |      |      |    |
|---------|------------|-------------|------|------|------|----|
| IFP 5B  | 1732070012 | 4,5 - 8,0   | 5,5  | 12,5 | 10,0 | 10 |
| IFP 9B  | 1732070014 | 8,0 - 12,0  | 9,5  | 16,0 | 13,5 |    |
| IFP 12B | 1732070016 | 12,0 - 16,0 | 12,0 | 16,5 | 16,5 |    |
| IFP 16B | 1732070018 | 16,0 - 19,0 | 16,0 | 19,5 | 20,5 |    |



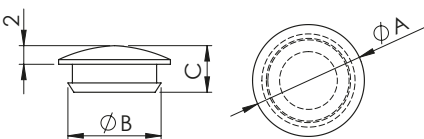
# DES PDM CAPS

## Caps for cable entry plates

### FEATURES

- Caps with convex head
- Available with black color
- For DES PDM cable entry plates

### Dimensions (mm)



The DES PDM CAPS keeps the product clean from the front, preventing dirt from settling in the screw seats.

**Material:** Polyethylene PE-HD

### RELATED PRODUCTS

- DES PDM 24
- DES PDM 24 FT
- DES PDM Q
- DES PDM S
- DES PDM KN



| Model        | Code       | Ø Hole (mm) | Dimensions (mm) |    |   | Pcs (/pack) |
|--------------|------------|-------------|-----------------|----|---|-------------|
|              |            |             | A               | B  | C |             |
| DES PDM CAPS | 1732019980 | 9,5         | 13              | 10 | 5 | 50          |

